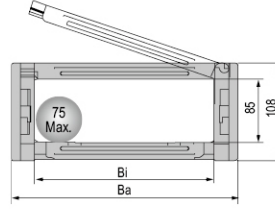
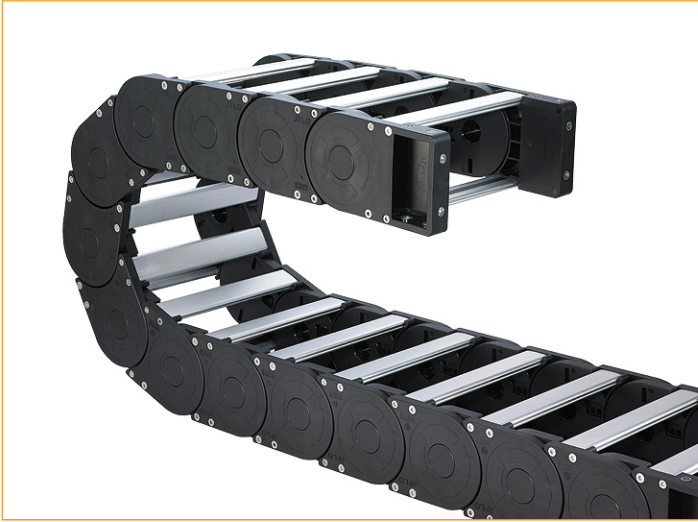


JN80Q.1.W 系列 - 桥式外侧开

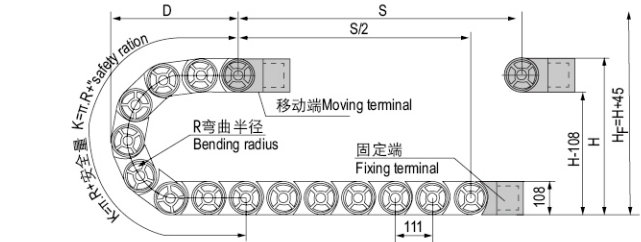
Series of JN80Q.1.W-Bridge type exterior opening

JFLO[®]



◎ 适用于直径 60 毫米以下线缆 Suitable for 60mm or less of cable.

主要技术参数 Basic technical data

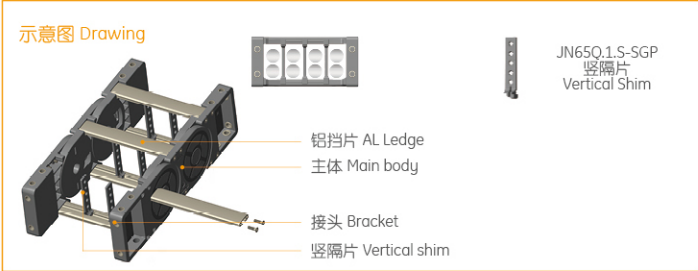


节距 = 111mm, 每米节数 = 9, 链长 = S/2 + K, S = 行程距离, K = π · R + "安全量"
Pitch = 111mm, link per meter = 9, length of chain = S/2 + K, S = stroke. K = π · R + "safety ration"

| | | | | | | | |
|---|-----|-----|------|------|------|------|------|
| R | 150 | 200 | 250 | 300 | 350 | 400 | 500 |
| H | 408 | 508 | 608 | 708 | 808 | 908 | 1108 |
| D | 315 | 365 | 415 | 465 | 515 | 565 | 665 |
| K | 777 | 888 | 1110 | 1221 | 1332 | 1554 | 1887 |

安装实际高度 :H_f=H+45mm(负载 2.2kg/m)

Actual mounting height:H_f=H+45mm(load 2.2kg/m)



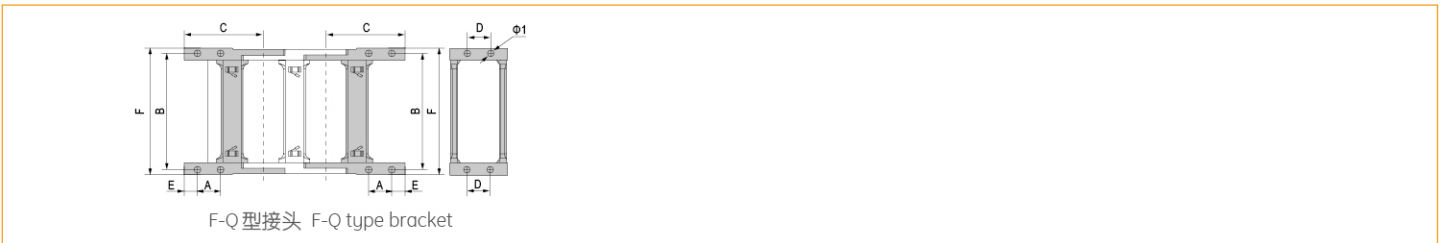
| 拖链型号 Cable Chain No. | 内高 Hi | 内宽 Bi | 外高 Ha | 外宽 Ba | 款式 Styles | 弯曲半径 Bending radius R | 固定接头类型及参数 Bracket type and parameters | | | | | | | | |
|----------------------------|----------|----------|----------|----------|--------------|-------------------------------------|---------------------------------------|---------------------------|----------------------|-----|-----|----|----|-----|---------------------|
| | | | | | | | 可配接头类型 Applicable bracket type | 孔径 Bore diameter Φ1 | 孔距 (mm)hole distance | | | | | | 接头代号 Bracket No. |
| | | | | | | | | | A | B | C | D | E | F | |
| JN80Q.1.75W | 85 | 75 | 108 | 127 | Q.W | 150,200,250, 300,350,400, 500 | F-Q | 9 | 35 | 103 | 140 | 66 | 20 | 127 | JN80Q.1.75W-FJT |
| JN80Q.1.100W | 85 | 100 | 108 | 152 | Q.W | | F-Q | 9 | 35 | 128 | 140 | 66 | 20 | 152 | JN80Q.1.100W-FJT |
| JN80Q.1.125W | 85 | 125 | 108 | 177 | Q.W | | F-Q | 9 | 35 | 153 | 140 | 66 | 20 | 177 | JN80Q.1.125W-FJT |
| JN80Q.1.150W | 85 | 150 | 108 | 202 | Q.W | | F-Q | 9 | 35 | 178 | 140 | 66 | 20 | 202 | JN80Q.1.150W-FJT |
| JN80Q.1.200W | 85 | 200 | 108 | 252 | Q.W | | F-Q | 9 | 35 | 228 | 140 | 66 | 20 | 252 | JN80Q.1.200W-FJT |
| JN80Q.1.250W | 85 | 250 | 108 | 302 | Q.W | | F-Q | 9 | 35 | 278 | 140 | 66 | 20 | 302 | JN80Q.1.250W-FJT |
| JN80Q.1.300W | 85 | 300 | 108 | 352 | Q.W | | F-Q | 9 | 35 | 328 | 140 | 66 | 20 | 352 | JN80Q.1.300W-FJT |
| JN80Q.1.350W | 85 | 350 | 108 | 402 | Q.W | | F-Q | 9 | 35 | 378 | 140 | 66 | 20 | 402 | JN80Q.1.350W-FJT |
| JN80Q.1.400W | 85 | 400 | 108 | 452 | Q.W | | F-Q | 9 | 35 | 428 | 140 | 66 | 20 | 452 | JN80Q.1.400W-FJT |
| JN80Q.1.500W | 85 | 500 | 108 | 552 | Q.W | | F-Q | 9 | 35 | 528 | 140 | 66 | 20 | 552 | JN80Q.1.500W-FJT |
| JN80Q.1.600W | 85 | 600 | 108 | 652 | Q.W | | F-Q | 9 | 35 | 628 | 140 | 66 | 20 | 652 | JN80Q.1.600W-FJT |

单位 (unit): mm

注: Q.W 表示桥式外侧开, F-Q 表示: 桥式方型接头, 不同序号表示安装孔的不同排列样式

Note: Q.W Bridge type exterior opening, F-Q: bridge type square bracket, Different serial number indicates the difference rank type of fixing holes

固定接头类型及参数 Fix bracket type and parameters (见表格 See table)



F-Q 型接头 F-Q type bracket

订货示例 Order Example

示例 拖链内高 85mm、内宽 75mm、半径 150mm、长度 1 米 / 9 节 (Sample: inner height 85mm, inner width 75mm, radius 150mm, length 9 links/1 meter)

拖链 chain JN80Q.1.75W R150 1000mm / 9 Links (实际长度 Physical length: ± 2mm)

接头 Connector JN80Q.1.75W-FJT 1 副 (Set)

配件 Accessories 每节装 1 个竖隔片 / 1 个横隔片 (1 vertical shim/1 horizontal shim can be mounted in every link)